



Supported by the
European Commission under the
Intelligent Energy - Europe
Programme



EPA-NR

Energy Performance Assessment

for Non-Residential Buildings

in Europe

Bart Poel, EBM-consult

Content



- The EPBD as a starting point
- Key issues in development of assessment methods
- Accuracy of the assessment process
- EPA-NR (EPA-ED)

visit:

www.epa-nr.org

www.epa-ed.org

Project Partners



AUSTRIA

- Arsenal Research
- Österreichisches Ökologie Institut (ÖÖI)

DENMARK

Danish Building Research Institut (SBI)

FRANCE

Centre Scientifique et Technique du Bâtiment (CSTB)

GERMANY

Fraunhofer-IBP

GREECE

National Observatory of Athens (NOA)

ITALY

National Agency for New Technology, Energy and the Environment (ENEA)

The NETHERLANDS - Netherlands Organisation for Applied Scientific Research (TNO)

- EBM-consult (project co-ordinator)

Key issues

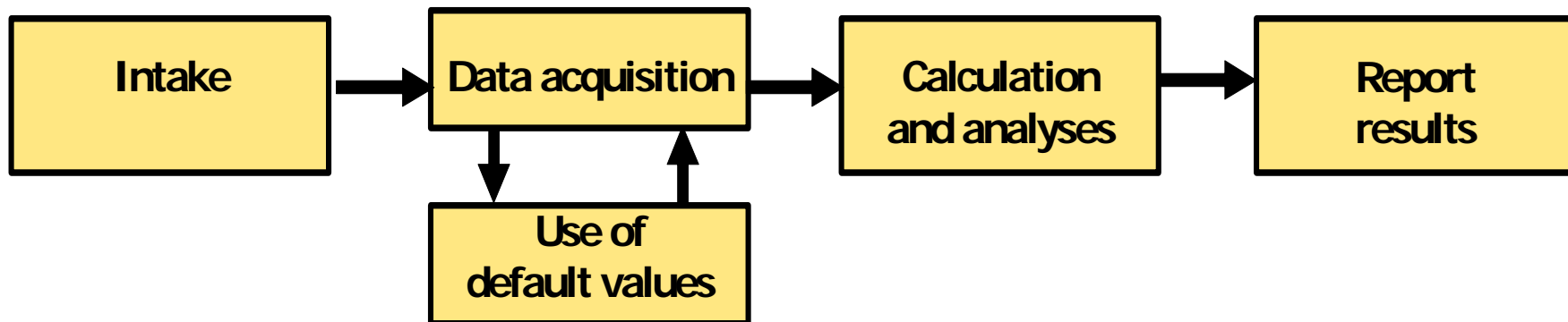
Balance the trade-off's in the assessment process

- **Effective and efficient process
(accuracy/reproducibility ~ cost)
(data acquisition/inspection ~ defaults)**
- **Harmonisation~flexibility in practice
(European - national - regional)**

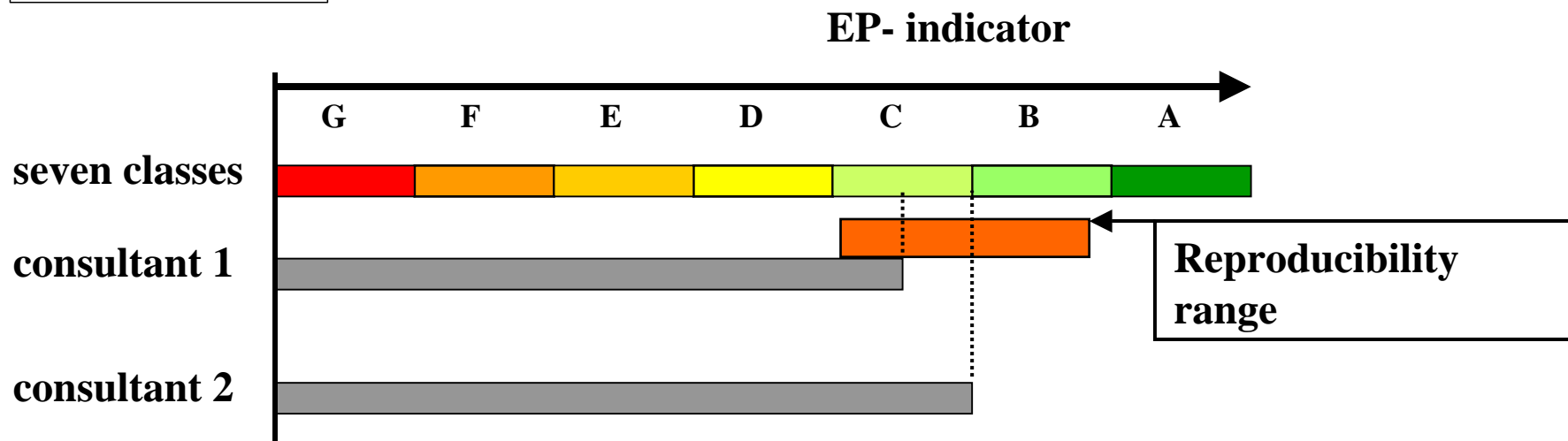
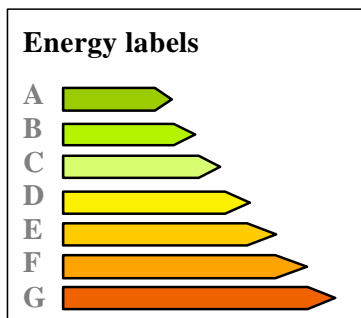
Assessment process

Stages are dependent on building type, type of client, number of buildings

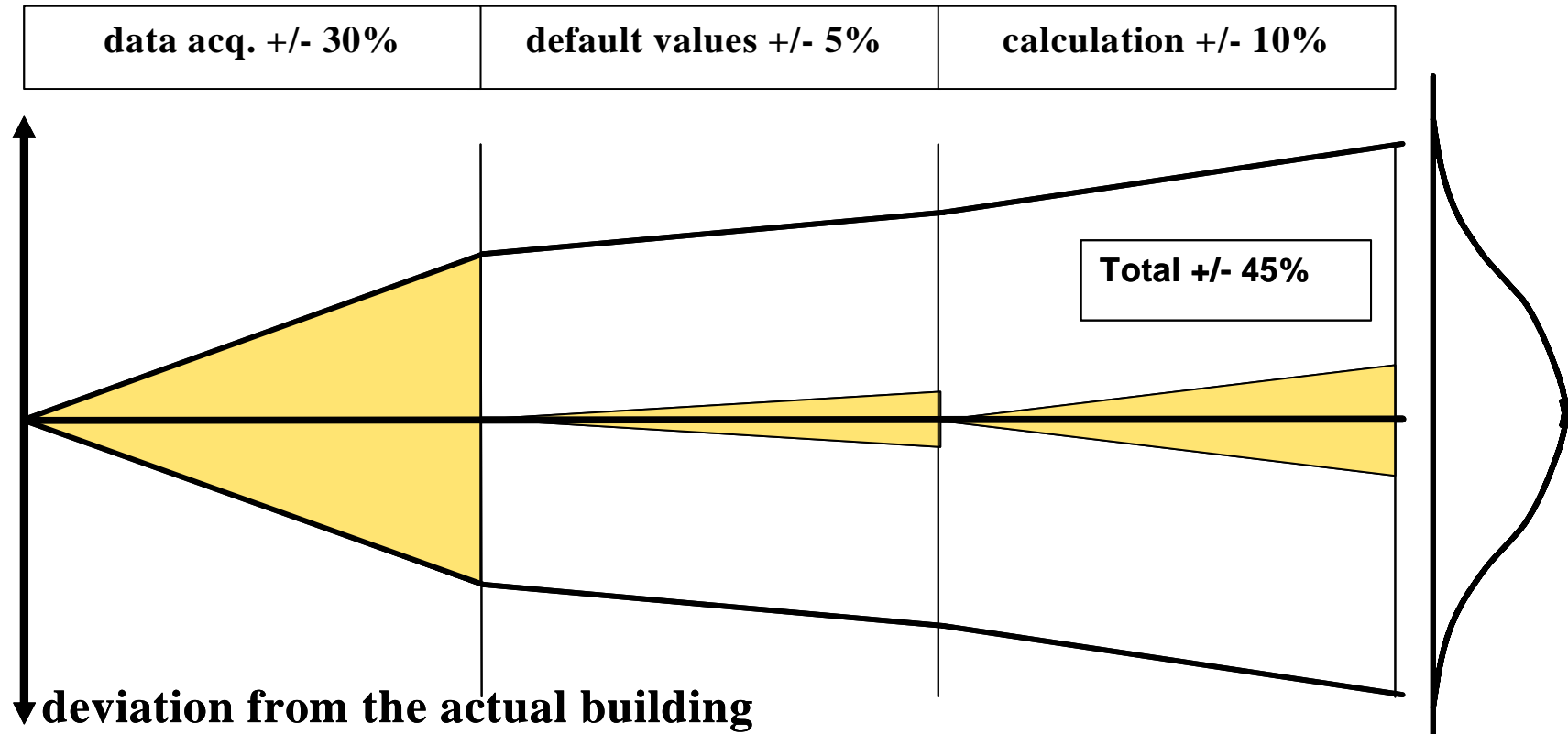
Typical stages



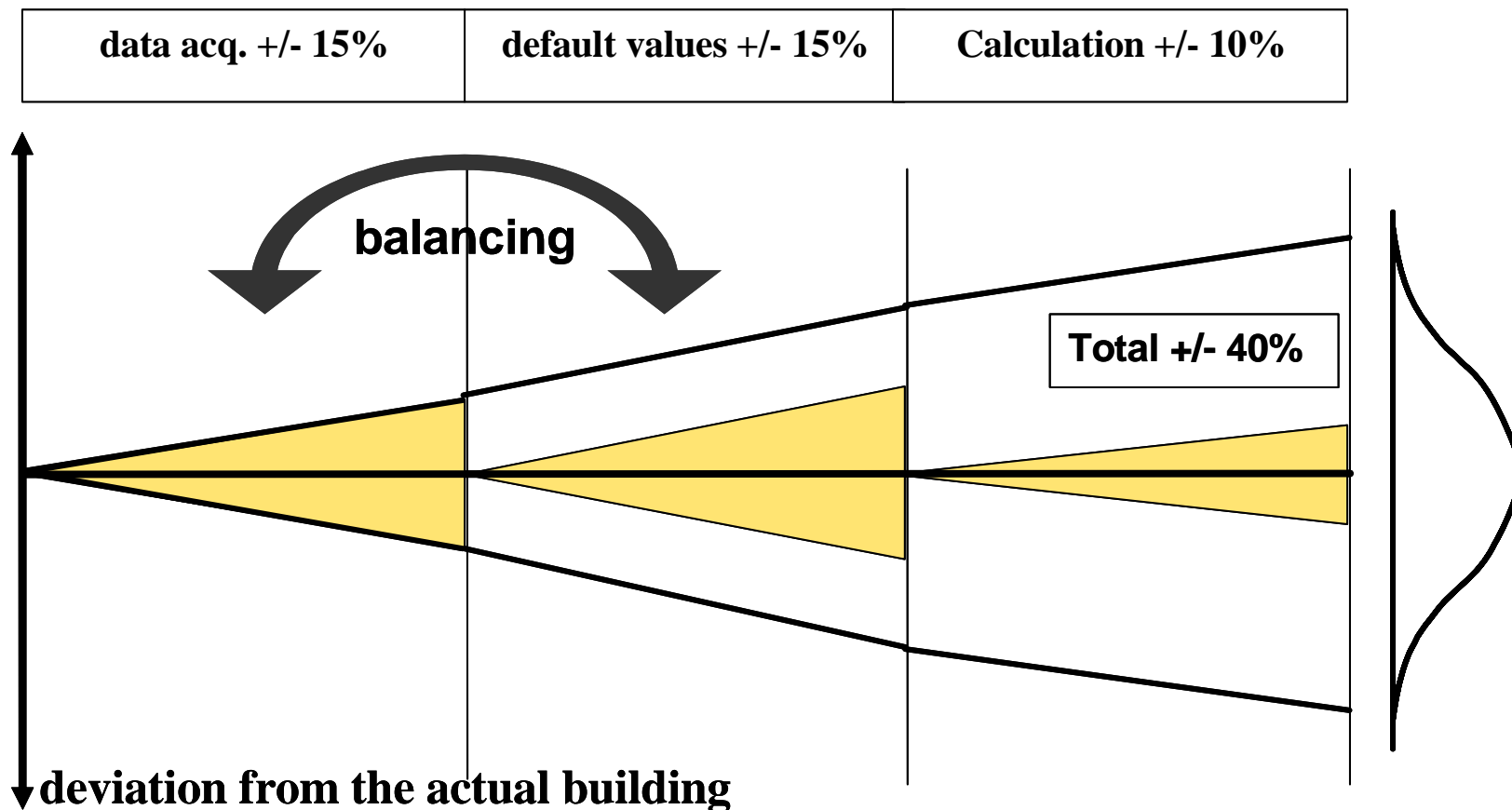
Reproducibility in certification



Accuracy of the assessment



Balancing accuracies



Objectives EPA-NR

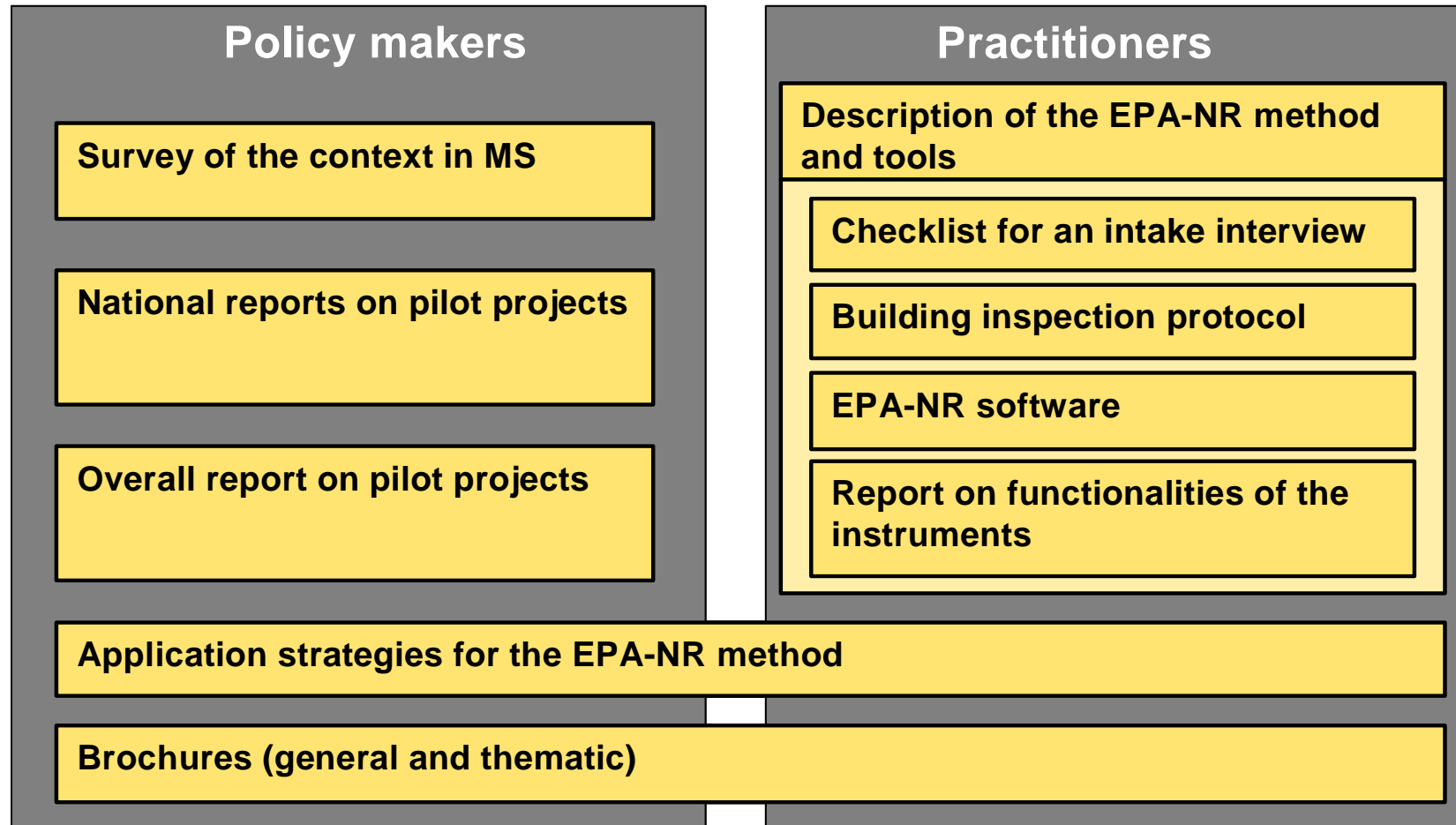
To support Member States in the EPBD implementation by:

- **producing a general method for the assessment of the energy performance of existing non residential buildings that can easily be applied in practice. (practitioners)**
- **provide guidance for those implementation aspects that are related to the method. (policy makers)**

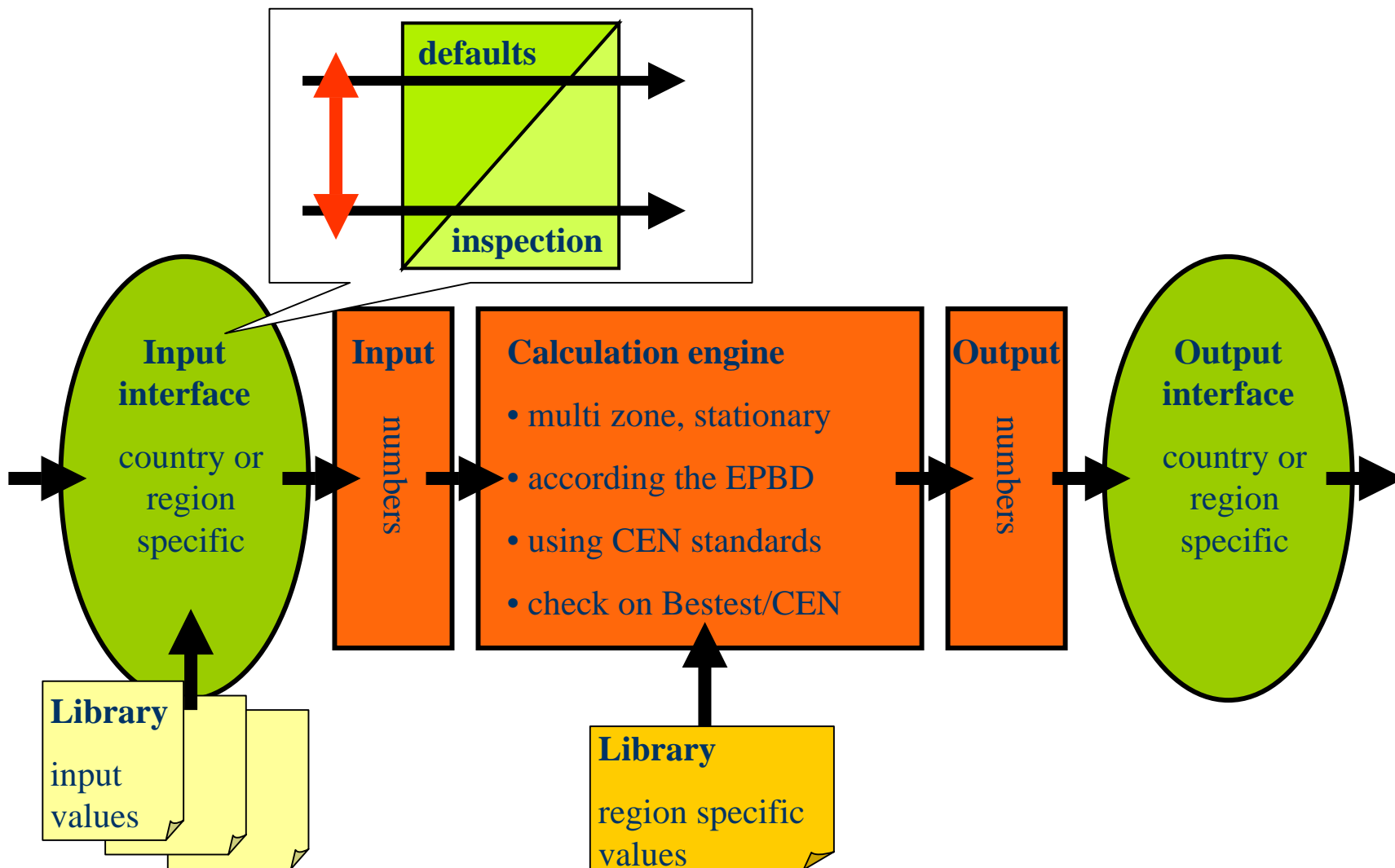
More specifically:

- **benefit from experiences in the MS**
- **provide a method and instruments (including software)**
- **test and show the functioning in practice**
- **provide guidance to end-users and policy makers**
- **exchange knowledge and ideas**

Deliverables EPA-NR (EPA-ED)



EPA-NR software



Pilots EPA-NR

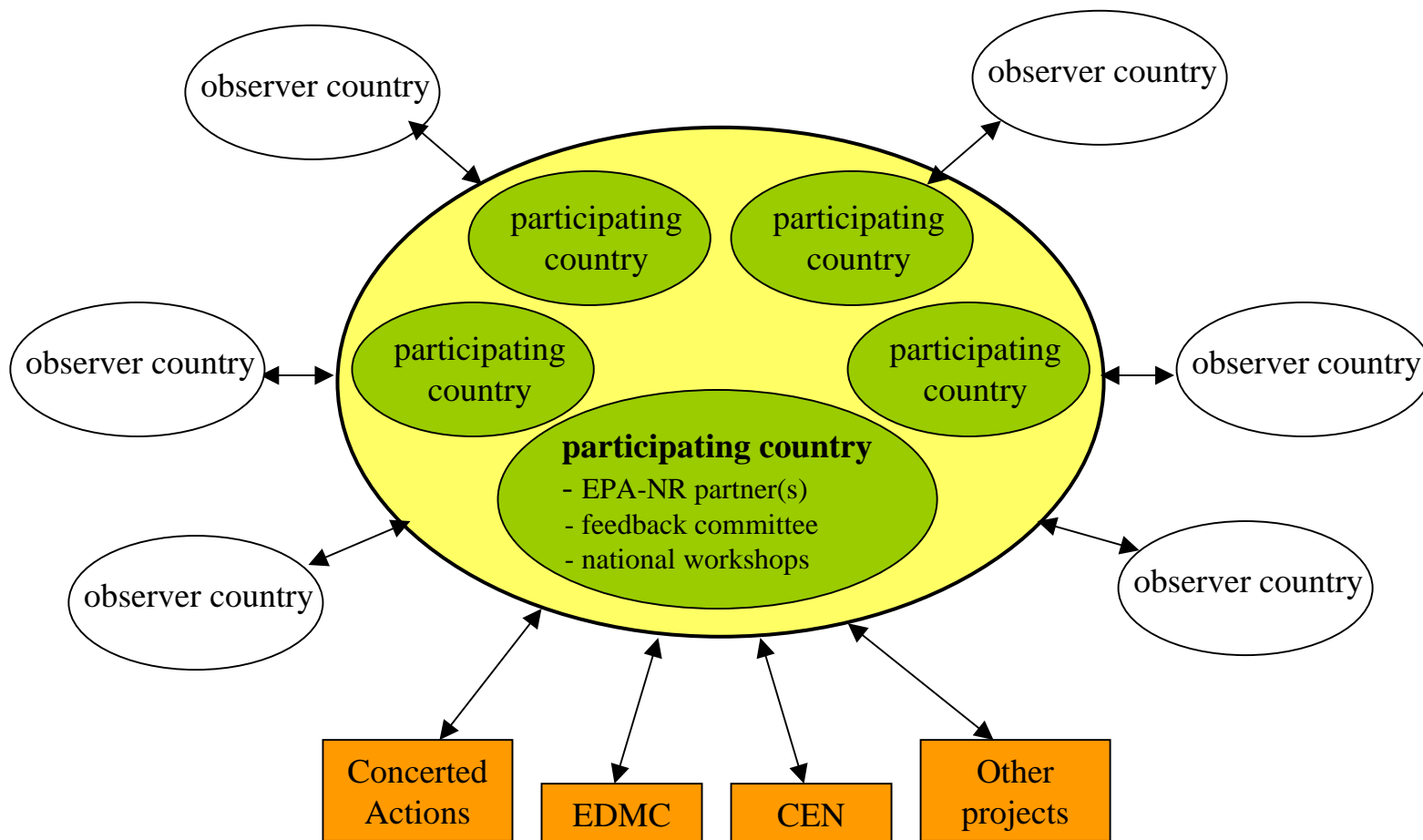


To evaluate the method and tools and provide examples:

- building sectors: education, offices, health care
- each sector represented in 7 countries: 21 projects
- building ages vary from 2 to 70 years
- sizes range from 780 to 30,000 square meters



Interactions



Interactions



May 2006

Budapest Congress - Workshop EPA-
NR / EPLabel / EnperExist

14

Interactions



May 2006

Budapest Congress - Workshop EPA-
NR / EPLabel / EnperExist

15

Work packages

